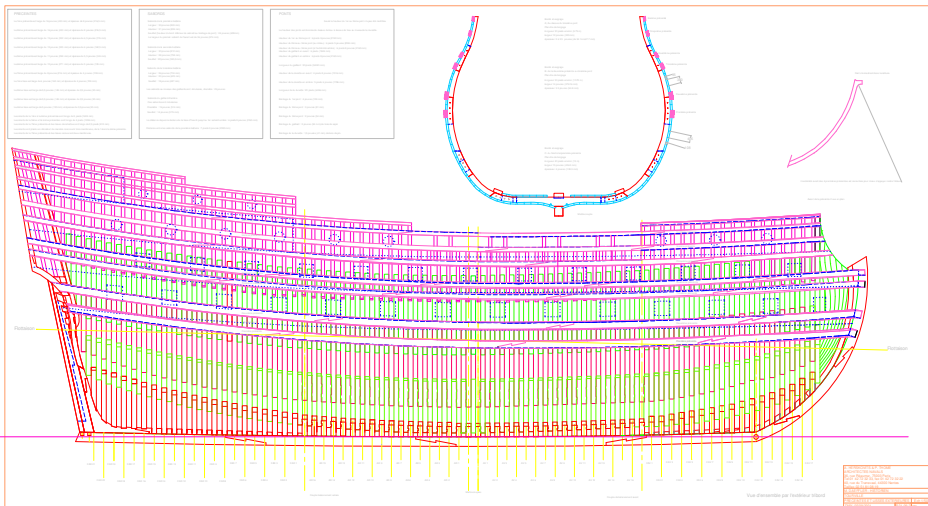
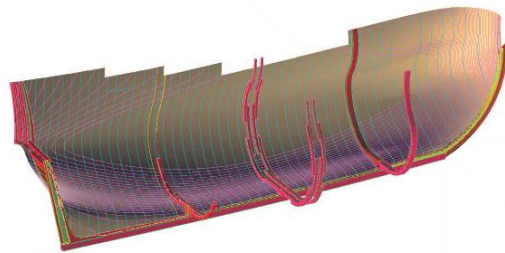
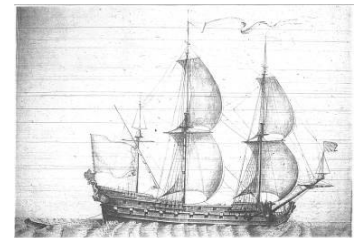
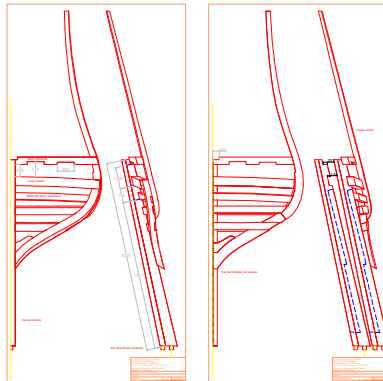
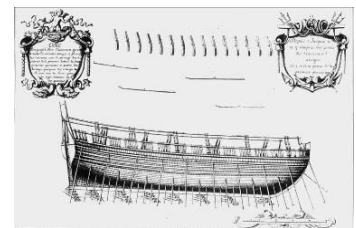
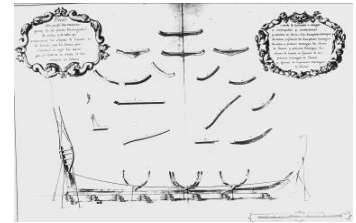
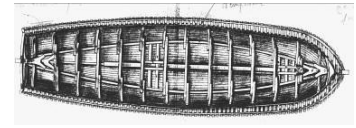
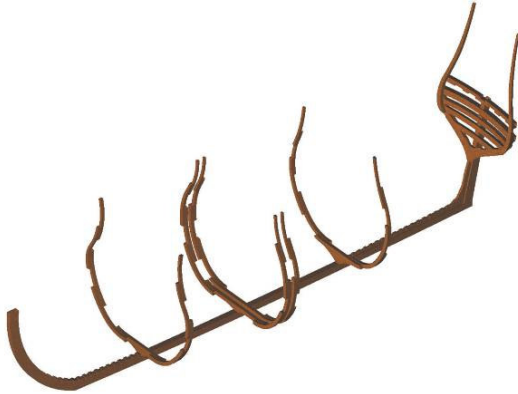




LE TOURVILLE, UN VAISSEAU DE LIGNE DE LA MARINE DE LOUIS XIV



Objectifs du projet

Reconstruction d'un vaisseau de ligne de la marine de Louis XIV dans le cadre d'un chantier visitable

Armateur

Association le Tourville – Dunkerque

Prestation HT₂

Analyse et conseil architectural en relation avec des historiens de marine, modélisation et débit des pièces