



Nantes : 11, rue du Calvaire, 44000 Nantes, Tél. 02 40 48 16 66, fax 02 40 48 04 81 – Paris : 11, passage Boudin, 75020 Paris, Tél. 01 42 72 32 33, fax 01 42 32 22

HT₂ - HERSKOVITS, THÔMÉ & TOBIE, ARCHITECTURE NAVALE ET INGENIERIE MARITIME

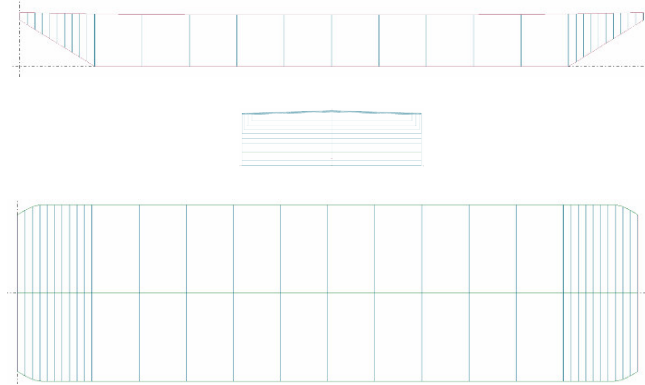
PARIS PLAGE 2003

BARGE AMENAGEE EN SUPPORT DE SALLE DE CONCERT

Lieu Quai de l'Hôtel de ville – Paris 4^{ème}

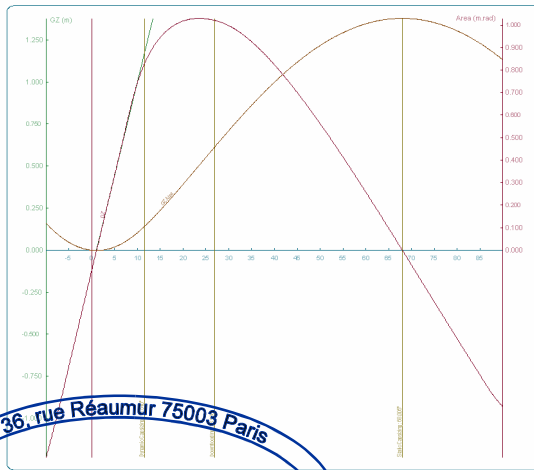
Type de projet Expertise hydrostatique

Client Ville de Paris



Stability Data, Default criterion, Forms - SISTRE / Sun Jul 20 01:56:55 2003 / page 1/3
Water Density: 1.0000, Length in m, Surfaces in m², Volumes in m³, Weights in t³, Heel on Portside?!

Shp:	76.000t	AP @:	0.000m	AP Draft:	0.479m
Sx:	0.120m	FP @:	25.000m	FP Draft:	0.599m
Sy:	2.000m	K Point at:	0.000m	Trim:	-0.119m
Sz:	12.835m	KMT:	8.415m	Heel:	1.054°
Tanks:	0.000t	Total Load:	76.000t	GM:	1.054m
Tx:	0.000m	TLx:	0.120m	UM:	8.502m
Ty:	0.000m	TLy:	2.000m	Freeboard:	1.328m
Tz:	0.000m	TLz:	12.835m	Downflooding:	26.966°



36, rue Réaumur 75003 Paris
André Herskovits, expert fluvial
agréé Ministère des transports

Tél 01 42 72 32 33, Fax 01 42 72 32 22, Mob 08 12 13 16 76

